



WEST CARCLAZE

GARDEN VILLAGE . CORNWALL

*Cornish wildlife
colouring book*



Trees



Horse
Chestnut



Oak



Silver Birch



Sycamore



Beech



Sweet
Chestnut





Garden Snail

Common Green
Grasshopper

Harlequin ladybird

Peacock Butterfly

Peacock Caterpillar

Red Legged Shield Bug

Slug

Crane Fly

Thick thighed flower
beetle

Unarmoured stick insect
(Originally from New
Zealand the Unarmoured
stick insect has now
naturalised in Cornwall.)

Earthworm

Dor Beetle Anatomy

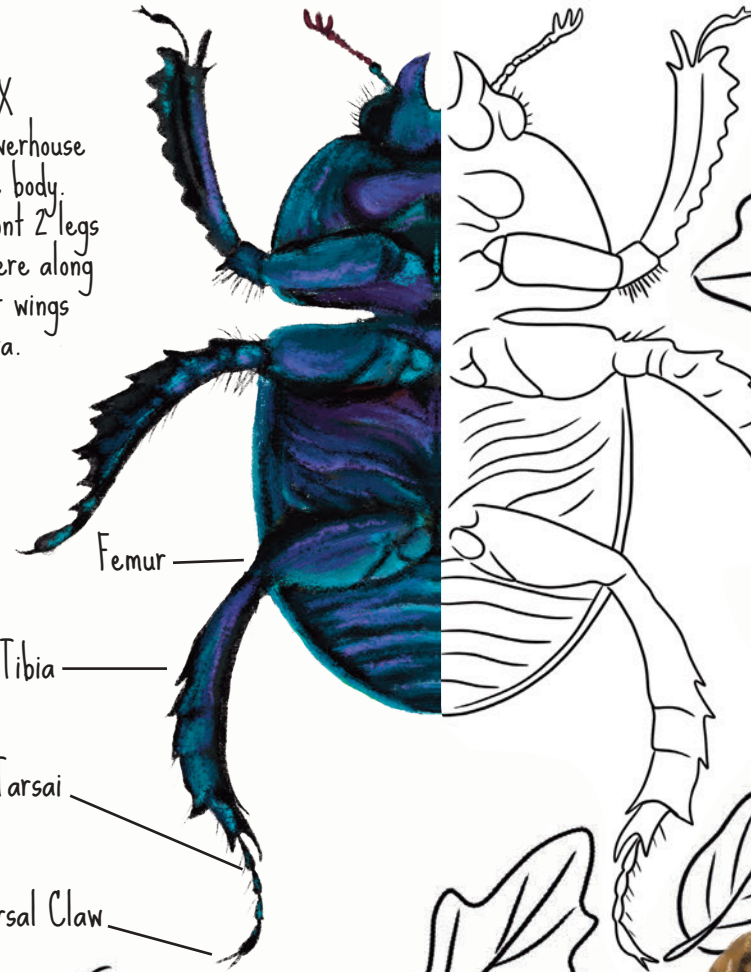
HEAD

The head is where the beetle's eyes, mouth, brain, and antennae are found.



THORAX

This is the powerhouse of the beetle body. The beetle's front 2 legs are attached here along with its flight wings and elytra.



Femur

Tibia

Tarsai

Tarsal Claw

ABDOMEN

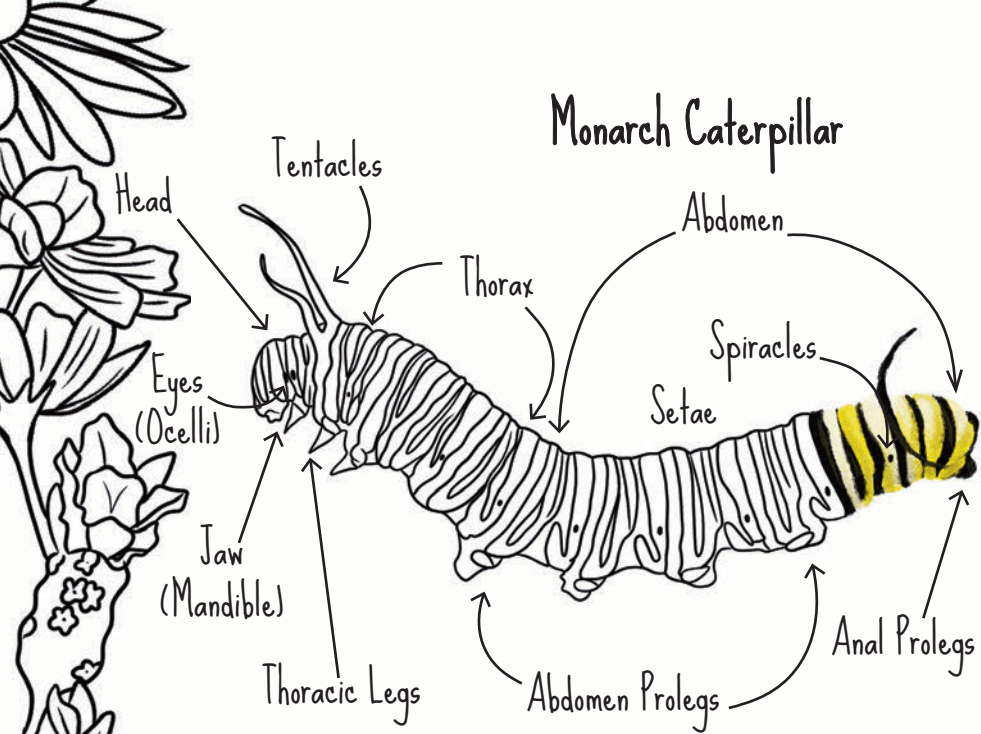
The abdomen contains the organs for digestion and reproduction.

Caterpillar & Butterfly Anatomy

Monarch Caterpillar

Insect bodies are split into 3 parts:
Head, thorax and Abdomen

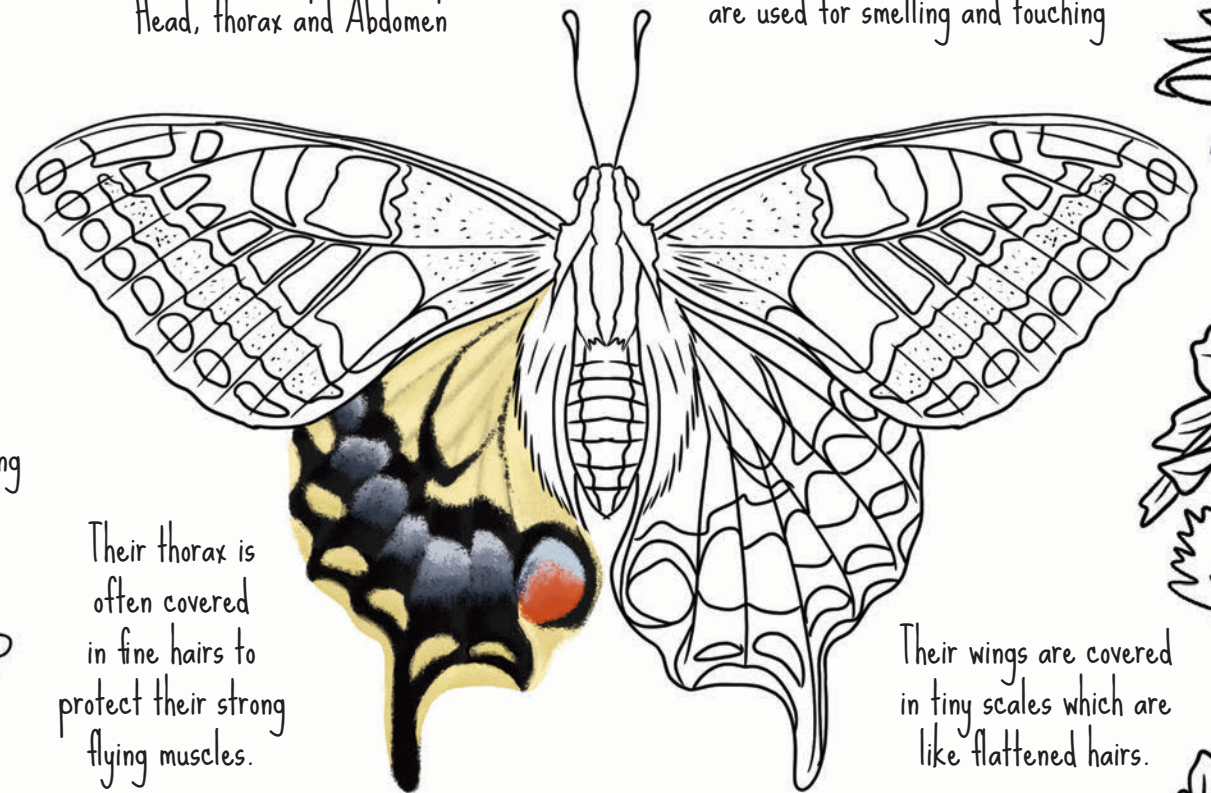
Butterflies have 2 antennae which
are used for smelling and touching



Swallowtail Butterfly

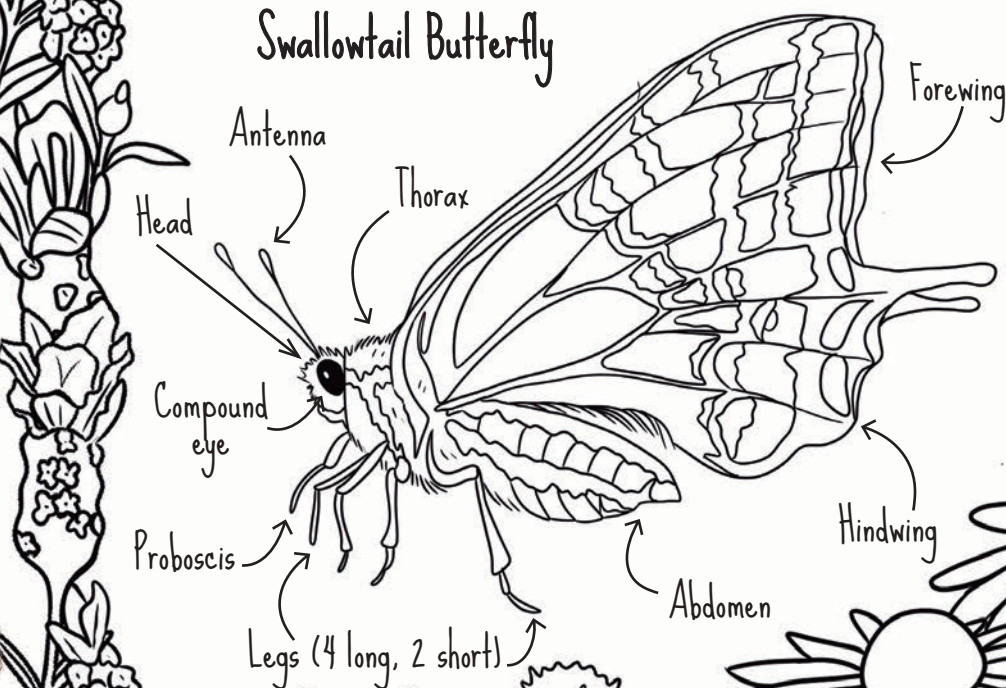
Their thorax is
often covered
in fine hairs to
protect their strong
flying muscles.

Their wings are covered
in tiny scales which are
like flattened hairs.



They have 1 pair
of forewings
and 1 pair of
hind wings.

Their wings come in a
variety of colours and
patterns.



Birds and Eggs

Barn Owl



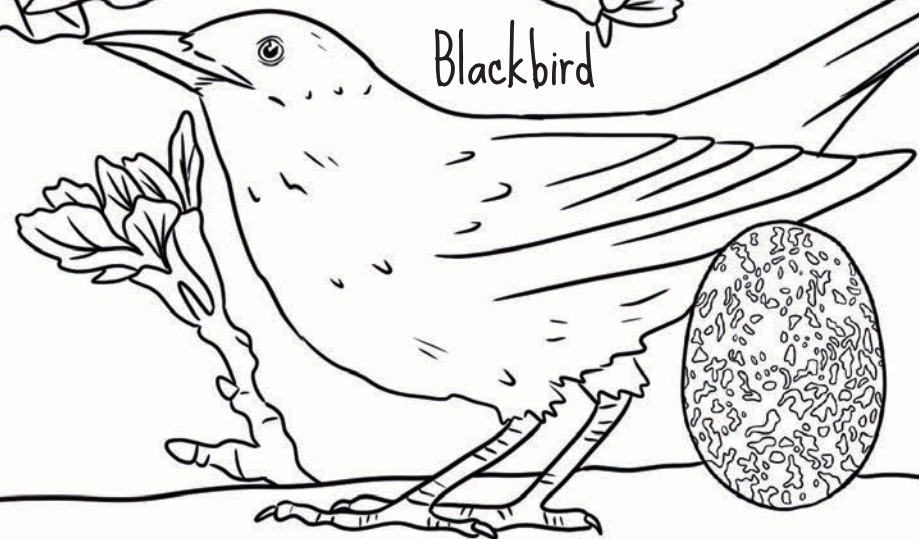
Blue Tit

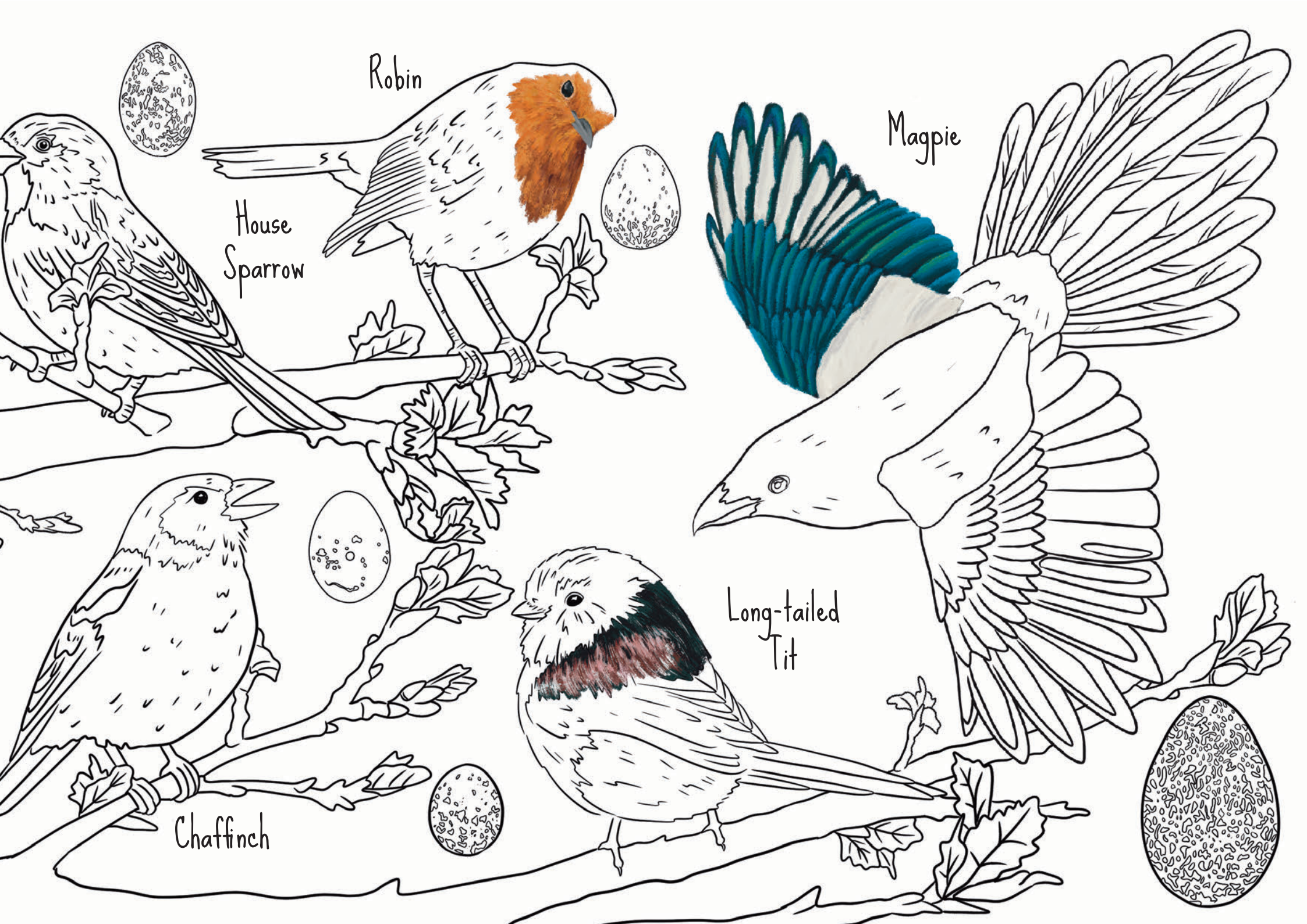


Wood Pigeon



Blackbird





Robin

House Sparrow

Magpie

Long-tailed Tit

Chaffinch

Marine Mammals

Fin Whale

Short-beaked common dolphin

Beadlet anemone

Common starfish

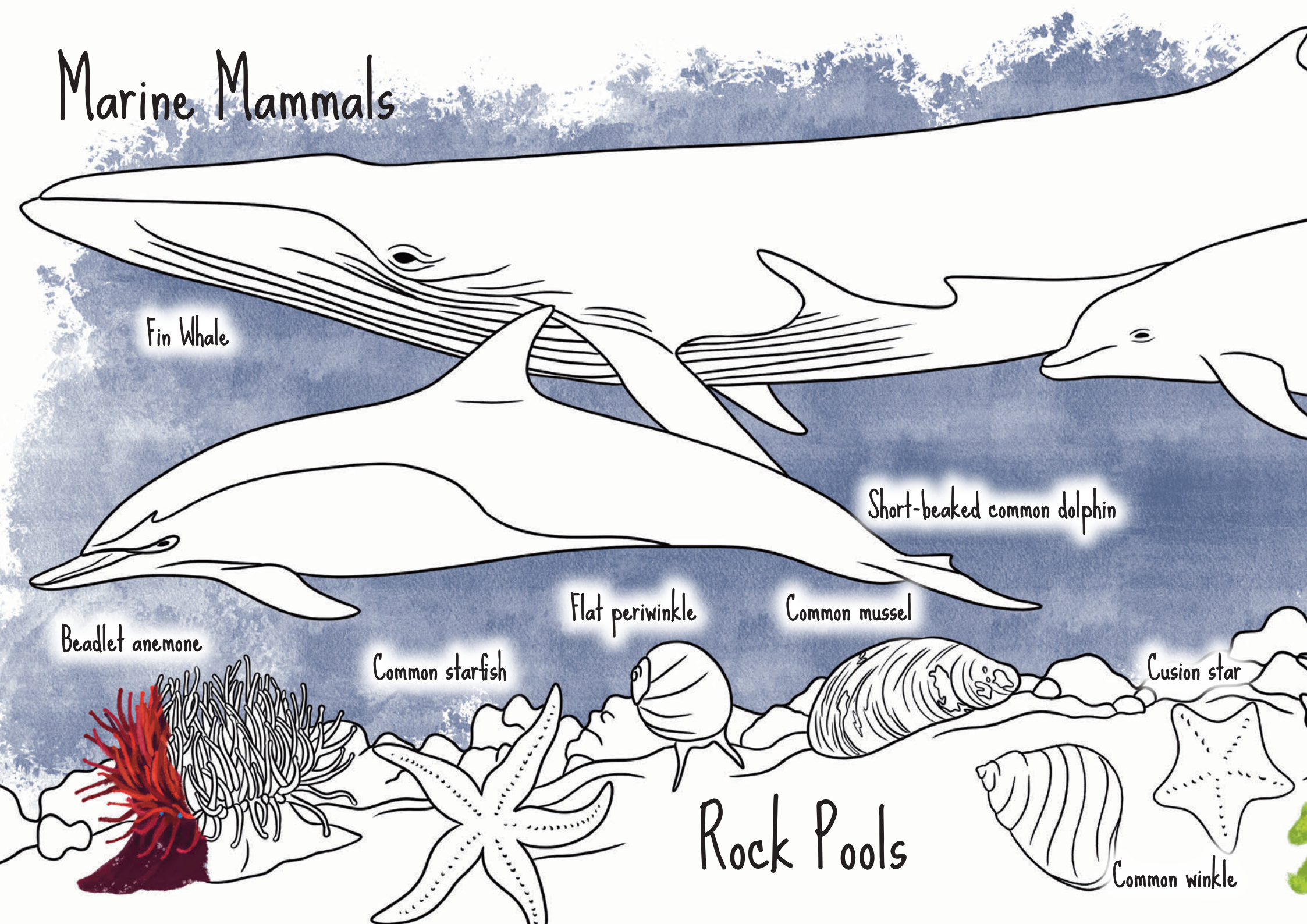
Flat periwinkle

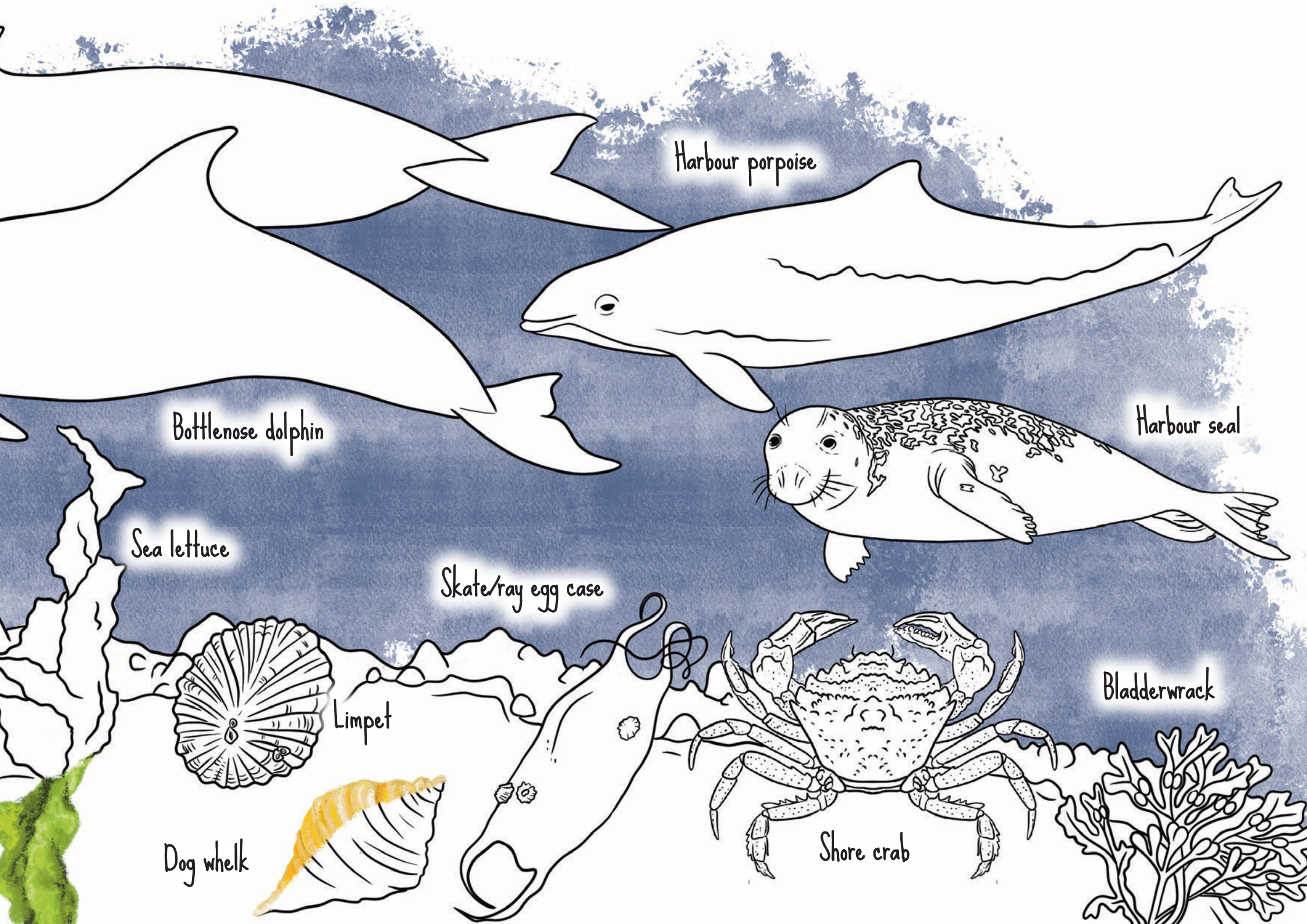
Common mussel

Cusion star

Rock Pools

Common winkle





Harbour porpoise

Bottlenose dolphin

Harbour seal

Sea lettuce

Skate/ray egg case

Limpet

Dog whelk

Shore crab

Bladderwrack

Bees

Tawny Mining Bee



Honey Bee



Common Carder Bee



Red Mason Bee



White-tailed
Bumblebee



Tree
Bumblebee



Red-tailed
Bumblebee



Ashy Mining Bee



Pond life

Grey heron

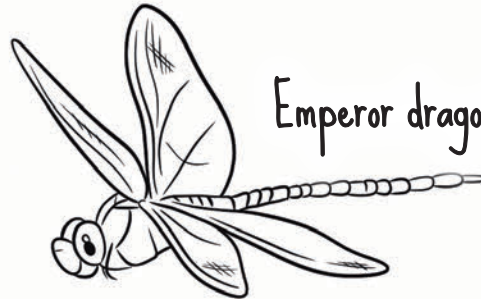
Beautiful demoiselle damselfly



Common darter dragonfly



Emperor dragonfly



Mallard duck (Male)



Common Toad



Common toad



Water boatman



Dragonfly nymph



Smooth newt (Male)



Three spined stickleback



Palmate newt (Male)





Otter



Hedgehog



Domestic Cat / Wildcat



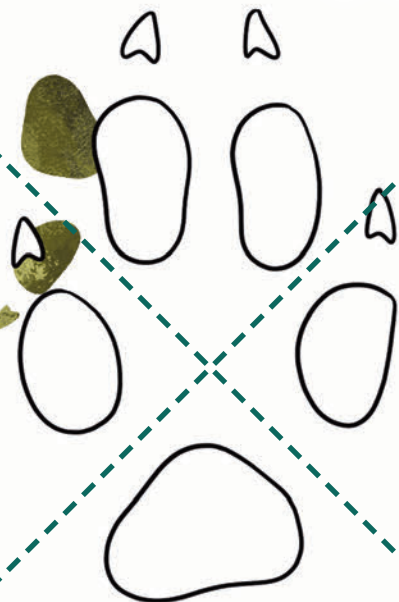
Badger



F



Hare



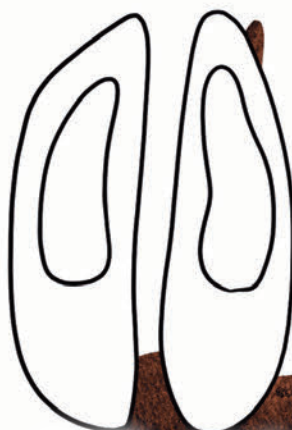
Red Fox



Dog



Rabbit



Red Deer (7cm)



Fallow Deer (6cm)



Roe Deer (5cm)

Fox tracks can be confused with dog and cat tracks. A key difference is that you can draw a diagonal cross through a foxes print or a horizontal line between the top two or bottom two toe pads.

Animal Tracks



Clouds

Cirrocumulus

Cirrus

Alto cumulus

Nimbostratus

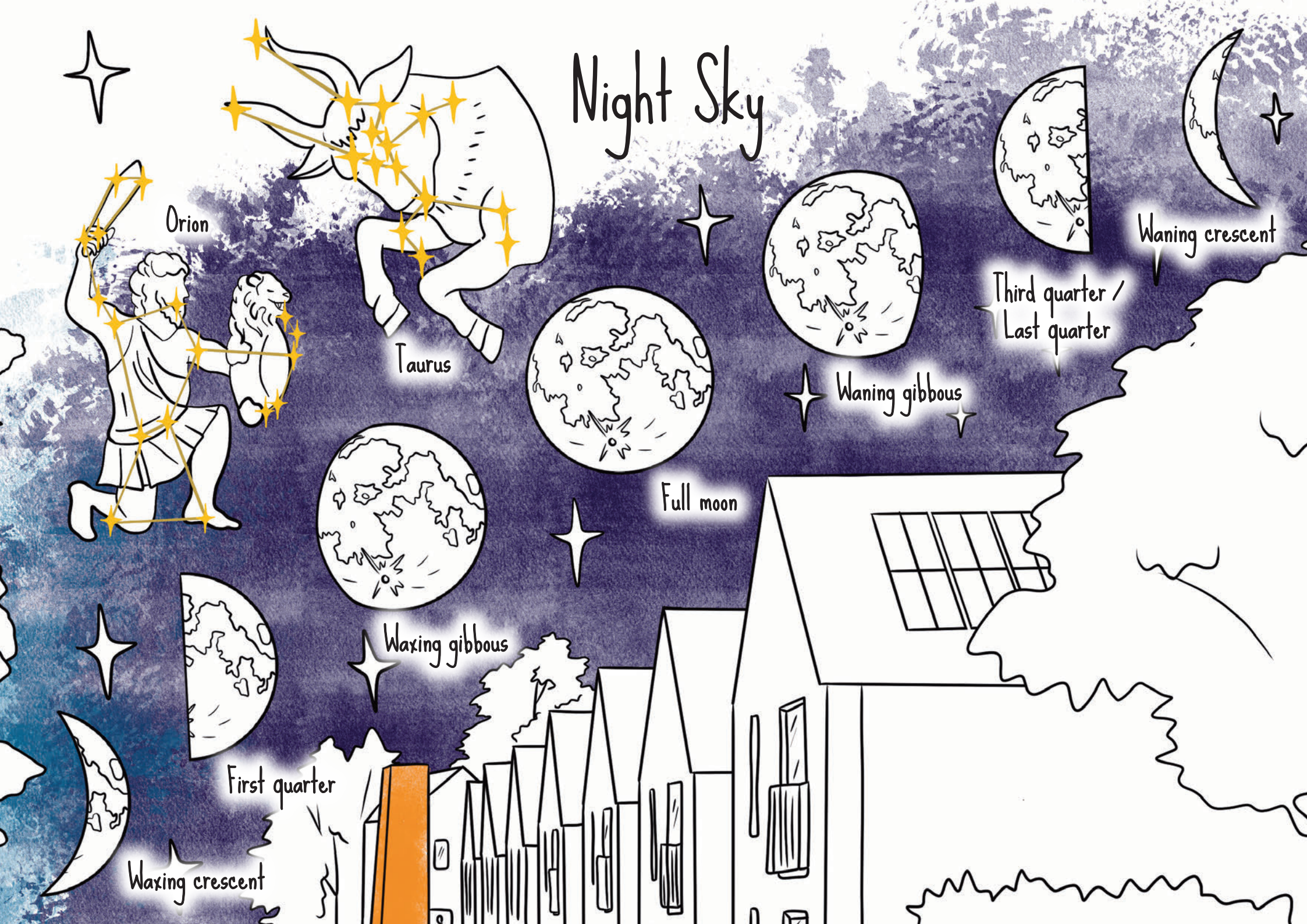
Alto cumulus

Cumulus

Cumulonimbus



Night Sky



Orion

Taurus

Full moon

Waxing gibbous

First quarter

Waxing crescent

Waning gibbous

Third quarter /
Last quarter

Waning crescent



THE LITTLE
Naturalists
CLUB

littlenaturalistsclub.co.uk

